

39th Romanian Symposium on Geomorphology
19-21 September 2024, Iași

The Symposium on Geomorphology will be organized by the Romanian Association of Geomorphologists and Alexandru Ioan Cuza University of Iași - Faculty of Geography and Geology, Department of Geography

Conference Proceedings will be published in a special issue of Revista de Geomorfologie

Keynote Speaker: Prof. Dr. Alexander Brenning, Head of Chair, Institute of Geography, Friedrich Schiller University, Jena, Germany - <https://www.geographie.uni-jena.de/en/280/brenning>

Website: <https://sng.geomorfologie.ro/>

Scientific committee:

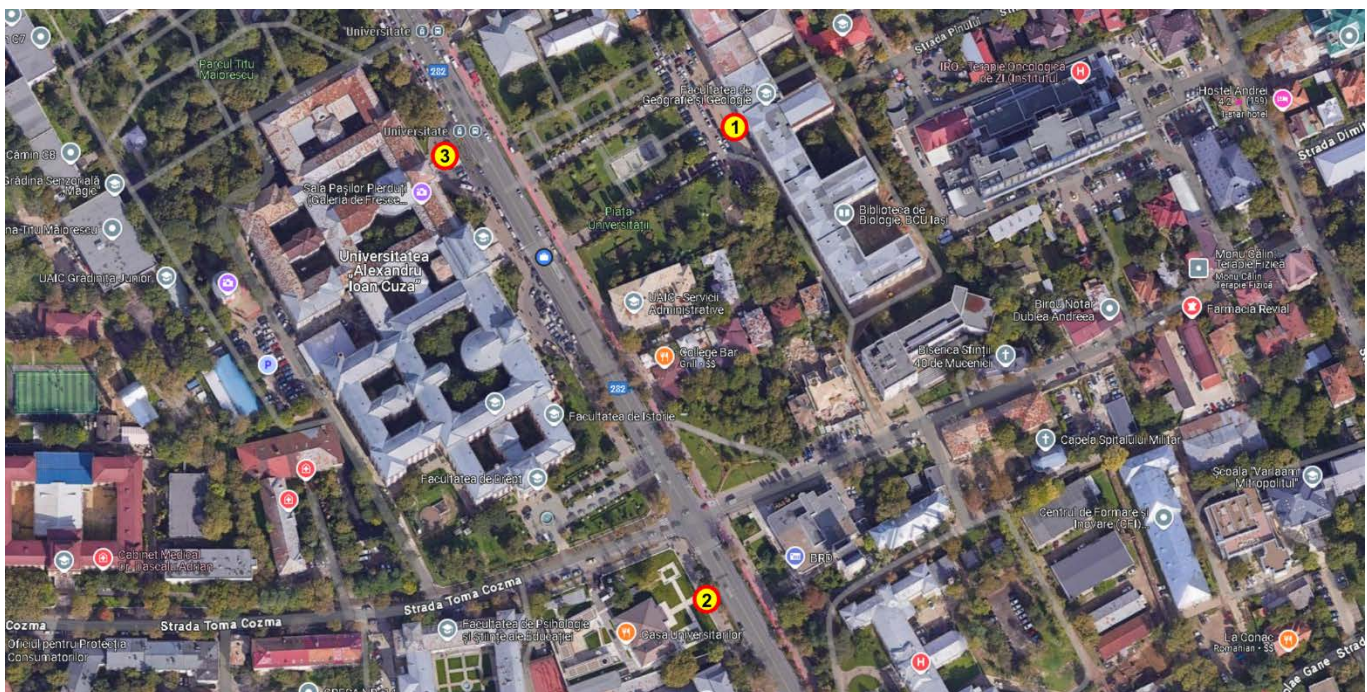
Dan BĂLTEANU, Institute of Geography, Romanian Academy, Bucharest
Sandu BOENGIU, University of Craiova
Lucian DRĂGUȚ, West University of Timișoara
Dan DUMITRIU, „Alexandru Ioan Cuza” University of Iași
Mihai MICU, Institute of Geography, Romanian Academy, Bucharest
Mihai NICULIȚĂ, „Alexandru Ioan Cuza” University of Iași
Alexandru ONACA, West University of Timișoara
Olimpiu POP, „Babeș–Bolyai” University, Cluj-Napoca
Răzvan POPESCU, University of Bucharest

Maria RĂDOANE, „Ștefan cel Mare” University of Suceava
Sanda ROȘCA, „Babeș–Bolyai” University, Cluj-Napoca
Ioan RUS, „Babeș–Bolyai” University, Cluj-Napoca
Florin TĂTUI, University of Bucharest
Petru URDEA, West University of Timișoara
Mirela VASILE, University of Bucharest
Maria-Laura TÎRLĂ, University of Bucharest
Alfred VESPREMEANU-STROE, University of Bucharest
Mircea VOICULESCU, West University of Timișoara

Local organizing committee:

Mihai Niculiță, Lilian Niacșu, Dan Dumitriu, Nicușor Necula, Georgiana Văculișteanu, Denisa Ursu

Venue Map



1 – entry in the B Building, for the Young Geomorphologists Day; 2 – Casa Universitarilor Restaurant for the Icebreaker; 3 – Entry for Aula Carmen Sylva

PROGRAMME

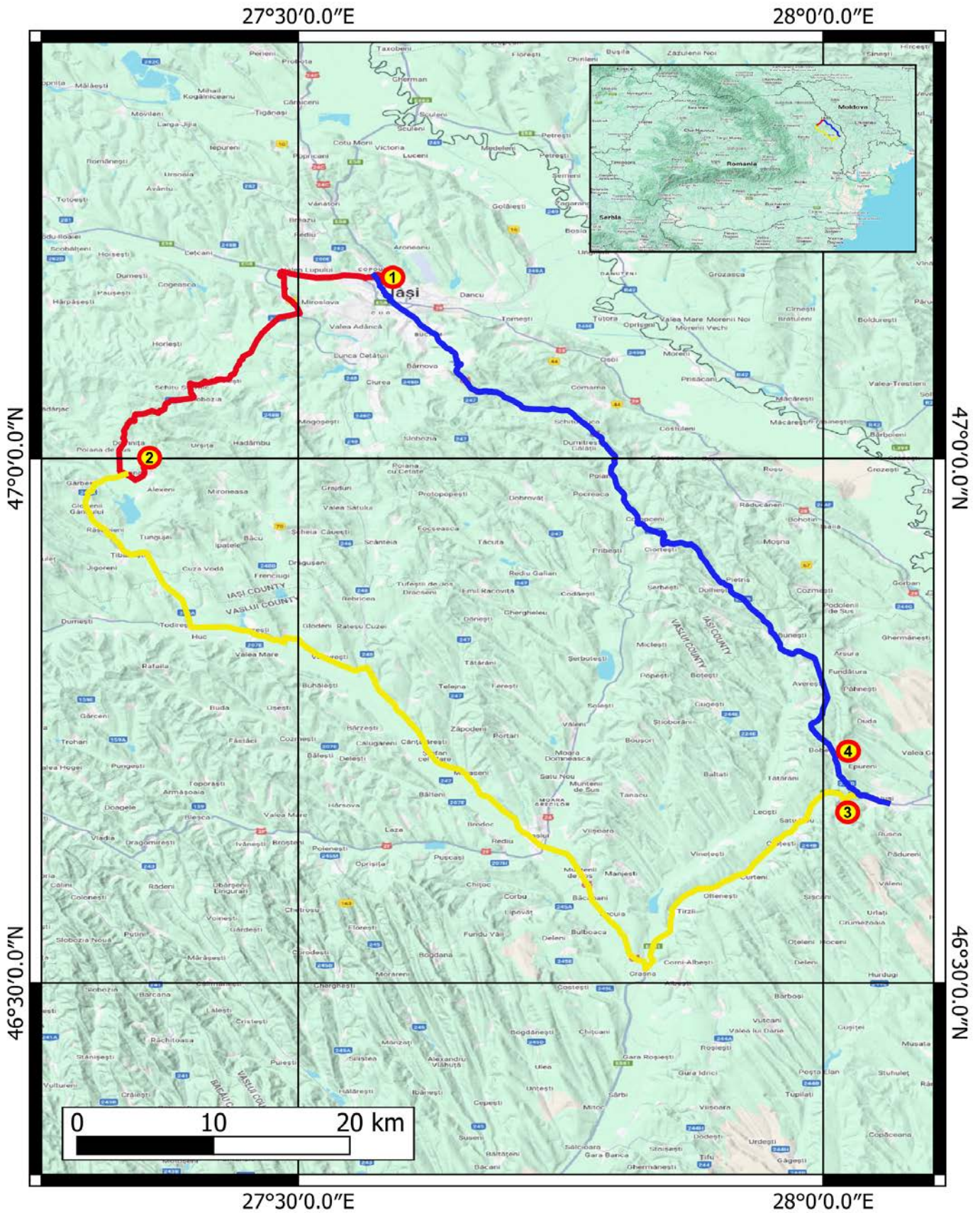
THURSDAY - 19 September 2024 - Faculty of Geography and Geology Building, 3rd Floor		
8:30-10:30	Alexander BRENNING, Mihai NICULIȚĂ	<i>Landslide Susceptibility Modeling with R</i>
10:30-10:45	Coffee Break 1	
10:45-12:15	Nicușor NECULA	<i>Processing InSAR Data: Applications of EGMS Products</i>
12:15-13:15	Lunch	
13:15-17:00	Nicușor NECULA, Mihai NICULIȚĂ	<i>Copou Active Landslides: Field Survey and Analysis</i>
17:30-21:00	Icebreaker - Casa Universitarilor Restaurant	

FRIDAY - 20 September 2024 - Carmen Sylva Aula, Main University Building		
8:00-8:40	Registration - Hall of the Echoing Footsteps	
8:40-9:10	Opening - Vice-Rector Lilian NIACȘU, Dean Adrian URSU Moderator: Mihai NICULIȚĂ	
9:10-9:50	Alexander BRENNING	<i>Modelling landslide susceptibility under the influence of climate and land use change</i>
9:50-10:10	Florin TĂTUI, Florin ZĂINESCU, Florin MIRON, Alfred VESPREMEANU-STROE	<i>Adaptation to coastal erosion on the Romanian Black Sea beaches – poor implementation of a necessary action</i>
10:10-10:30	Dan DUMITRIU	<i>Estimating the changes of river bed levels using hydrometric data</i>
10:30-11:00	Coffee Break 1	
Moderators: Mihai MICU, Florin TĂTUI		
11:00-11:20	Răzvan POPESCU	<i>New data for the cold scree from Romanian Carpathians</i>
11:20-11:40	Olimpiu POP, Ionela-Georgiana RĂCHITĂ, Iulian-Horia HOLOBĂCĂ, Mihai HOTEA, Horváth CSABA	<i>Snow avalanches in the Eastern Carpathians reconstructed with tree rings</i>
11:40-12:00	Nicușor NECULA, Mihai NICULIȚĂ	<i>EGMS Insights – A data management tool for processing and managing EGMS products</i>
12:00-12:20	Mihai NICULIȚĂ	<i>Radiocarbon dating of landslides in dry climates - opportunities of using paleosoil organic matter</i>
12:20-13:20	Lunch - Catering at Hall of the Echoing Footsteps	
Moderators: Răzvan POPESCU, Dan DUMITRIU		
13:20-13:40	Denisa URSU, Mihai NICULIȚĂ	<i>The challenge of classifying forms of linear erosion in Romanian geomorphological literature</i>
13:40-14:00	Ionuț-Costel CODRU, Lilian NIACȘU	<i>Gully erosion mapping and analysis of gully distribution in the Jijia Hills, Moldavian Plateau, using high resolution spatial data and semi-automated techniques</i>
14:00-14:20	Florin MIRON, Florin ZĂINESCU, Florin TĂTUI, Edward ANTHONY	<i>SWOT Data insights in the Danube Delta</i>
14:20-14:40	Răzvan-Laurențiu DOGARU, Otilia-Andreea COTELIN, Florin ZĂINESCU, Florin TĂTUI, Florin MIRON, Ștefan CONSTANTINESCU	<i>Hydrodynamic Modelling of the Danube Delta: Present vs Natural Conditions</i>

14:40-15:10	Coffee Break 2	
Moderator: Mirela VASILE		
15:10-15:30	Georgiana VĂCULIȘTEANU, Mihai NICULIȚĂ, Nicușor NECULA	<i>Identifying the main drivers of grassland degradation in the Moldavian Plateau</i>
15:30-15:50	Iulian FALTINSCHI, Marcel MÎNDRESCU	<i>Riverbed dynamic evolution of the Suceava River</i>
15:50-16:40	Posters - Hall of the Echoing Footsteps Moderator: Necula NICUȘOR	
	Mirela VASILE, Mihai MICU, Flavius SÎRBU, Daniela PASCAL, ASTER Team	<i>Activity of deep-seated landslides in Buzău Mountains (Vrancea seismic region) based on ¹⁰Be surface exposure dating</i>
	Alex CUVULIUC, Denisa URȘU, Mihai NICULIȚĂ	<i>An automated approach in estimating gully head erosion volume</i>
	Dan LESENCIUC, Andrei URZICĂ, Cristian SECU	<i>The role of landforms in shaping vegetation patterns in the Rarău Massif</i>
	Ioan Adrian LUNGOCI, Marcel MÎNDRESCU	<i>Ruiniform landform from the mountainous Suceava River catchment</i>
	Florina GRECU, Adriana MANEA-ILIE, Robert DOBRE, Mădălina TEODOR, Manel YAKHLEFOUNE, Carmen BIZDADEA	<i>Sectorization as a method of analysis in river dynamics. Case study Buzau River (Carpathian Mountains) and Rhumel River (Atlas Mountains)</i>
	Sandu BOENGIU, Daniel SIMULESCU, Oana MITITELU-IONUȘ	<i>Extending natural hazard impacts: Hușnicioara landslide monitoring and disruptions on road transportation network (Mehedinți County, Romania)</i>
	Mihai BARBACARIU, Marcel MÎNDRESCU	<i>The geomorphologic study of Suceava Municipality territory</i>
16:40-18:00	Association Business Meeting Moderator: Florin TĂTUI	
20:00-23:00	DINNER - Panoramic Restaurant at Hotel Unirea	

SATURDAY - 21 September 2024 - Fieldtrip in the Moldavian Plateau	
8:00-09:00	Meeting in front of B Building; Travel from Iași to Țibana
09:00-11:00	Visiting the "Ditches Hill" landslides and gullies and the Iron Age fortress
11:00-13:00	Travel from Țibana to Huși
13:00-15:00	Lunch at Dobrina Restaurant
15:00-15:30	Travel from Huși to Duda-Epurenii
15:30-17:00	Fieldtrip at "La Ruptură" hillslope - recent landslides
17:00-18:00	Travel from Duda-Epurenii to Iași

FIELDTRIP MAP



1 – B Building; 2 – "Ditches Hill" at Poiana Mănăstirii; 3 – Lunch at Dobrina Restaurant; 4 – "La Ruptură" hillslope at Duda-Epurenii;